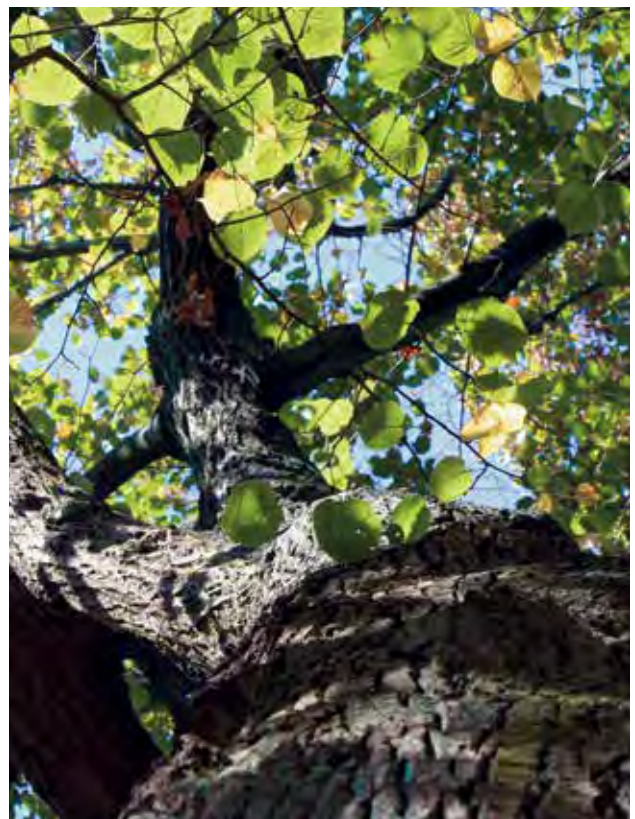


IML-RESI MD300

Lightweight hand drill, fast and easy to use



IML-RESI MD300

Lightweight hand drill, fast and easy to use

IML-RESI MD300

The IML-RESI MD300 is a purely mechanical drill that does not record an electronic or mechanical measurement curve. The user 'feels' the result and can read the penetration depth on the 300 mm scale. Often an abrupt and fast penetration is perceptible when the instrument detects a rot zone. Even conifer year rings can be felt.

- Cordless drill as drive unit
- Sturdy stainless steel housing
- Easy to read 1:1 depth scale
- Diameter of the drilling needle:
 - Needle tip: Ø 3,0 mm
 - Needle shaft: Ø 1,5 mm
- Available drilling depth 300 mm
- Drill spindle for external drill: Ø 12 mm

Scope of Delivery (Standard):

- MD300 drill attachment (depth 300 mm)
- 2 x drilling needle (Length 387 mm)
- Chuck key (hexagon socket 2,5 mm)
- Instructions manual



IML-RESI MD300



Drilling depth scale 1:1

IML-RESI MD300
without drill (only MD300)

Item No. 4000150

IML-RESI MD300
with Bosch drill GSR 18V Li-Ion Professional
- incl. 220V Li-Ion 18V battery charger + 2x Premium Li-Ion batteries 18V 5,0 Ah

Item No. 4000152

Optional Accessories

IML-RESI MD300

Drilling Needles IML-RESI MD300 (10 Pieces per Pack)
Length 387 mm

Item No. 3100317

Ouiver for MD300 Drilling Needles
For safe storage of approximately 50 drilling needles

Item No. 3103016

System Transport Case
incl. foam inlay and key

Item No. 3100313

Fast Charger 220V
for 18V Li-Ion Premium Batteries

Item No. 30009934

IML-RESI PowerDrill®

Uncompromisingly precision for all applications



IML-RESI PowerDrill®

Uncompromisingly precision for all applications

IML-RESI PD-Series

The IML-RESI Power Drill® can be used anywhere where reliable and meaningful test results are required.

- Comfortable with clear display
- Easy, fast and digital recording of the measurement data
- Fatigue-free operation due to the ergonomic design and low overall weight
- High drilling performance with minimal energy consumption
- Rugged and splashproof aluminium housing
- Simultaneous recording of drilling resistance and feed cam for better decay detection
- Automatic curve evaluation for wooden poles

Scope of Delivery (Standard):

- Measuring instrument PD with a mounted drilling needle
- Handle
- 25 m standard memory
- Quiver with 10 drilling needles
- 220V battery charger Li-Ion 18V
- 2x premium 18V Li-Ion batteries
- Mini-USB 2.0 data transfer cable
- Drill chuck with tools
- Pliers
- System transport case
- IML Software Center PD-Tools (incl. 3 installation licences)
- Instructions manual



IML-RESI PD400



Integrated 45° adapter

IML-RESI PD200
Drilling depth 200 mm

Item No. 3100900-2PD

IML-RESI PD300
Drilling depth 300 mm

Item No. 3100900-3PD

IML-RESI PD400
Drilling depth 400 mm

Item No. 3100900-4PD

IML-RESI PD500
Drilling depth 500 mm

Item No. 3100900-5PD

IML-RESI PD600
Drilling depth 600 mm

Item No. 3100900-6PD

IML-RESI PD750
Drilling depth 750 mm

Item No. 3100900-7PD

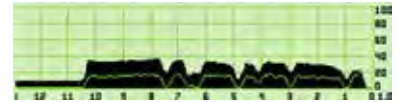
IML-RESI PD1000
Drilling depth 1000 mm

Item No. 3100900-8PD

Optional Add-Ons

IML-RESI PD-Series

FEED Measurement



Additional recording of the feed curve (compressive force) next to the drilling curve (torsional force). In some cases the feed curve contains a significantly reduced curve or no shaft friction at all acting on the drilling needle. This means that it is considerably easier to detect the difference between healthy and damaged wood. In addition, it is easier to diagnose rot on the feed curve at an early stage.

FEED Measurement

Item No. 4100017

TLT Tilt Sensor

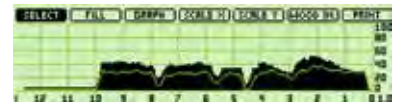


Tilt angle display and storage. Optional tilt compensation in the drilling depth preselection.

TLT Tilt Sensor

Item No. 4100018

SCL Scaling Package

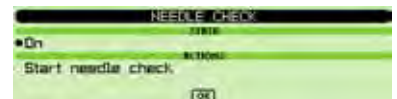


Scaling of the drilling depth on a scale of 1:1, magnification, and overall view (full drilling depth on display width). Scaling of the amplitude to a fixed factor of 1.0 / 1.5 / 2.0 / 2.5 / 3.0 or automatic scaling.

SCL Scaling Package

Item No. 4100019

NC Needle Check



Automatic check of needle tip for breakage and wear before every measurement. Different wear tolerances can be selected when ordering. The status of the needle (,ok' / ,worn') is stored with each measurement..

NC Needle Check

Item No. 4100015

MEM Memory Enlargement

Memory Enlargement MEM1*

50 metres recording length of the measurement curves

Item No. 4100008

Memory Enlargement MEM2*

100 metres recording length of the measurement curves

Item No. 4100009

Memory Enlargement MEM3*

180 metres recording length of the measurement curves

Item No. 4100010

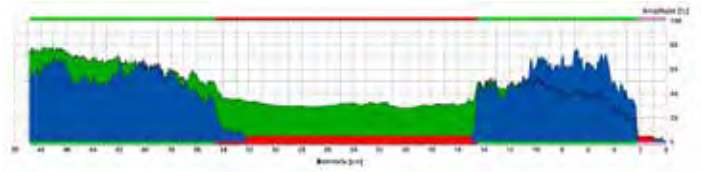
* If you have installed the feed module, the specified memory length is halved due to the additional measurement graph

IML Software & Optional Add-Ons

IML-RESI PD-Series

IML Software Center PD-Tools **PRO**

Extended evaluation software



Functions PD-Tools Standard:

- Configuration
- Transfer
- Analysis
- Magnification
- Print-out and saving

Additional functions PRO version:

- Export of several measurements
- Averaging
- Multi-printing
- Cavity detector
- Tree-ring analysis
- Live display during drilling on a PC or handheld device

IML Software Center PD-Tools PRO
incl. 3 installation licences

Item No. 3100808

Each additional license

Item No. 3100890

WoodInspector incl. PD-Tools **PRO**



The IML WoodInspector is an additional module for the PD-Tools PRO software package. An automatic assessment of wooden poles is performed by the IML WoodInspector. Its features are: graphic and numerical cavity detection, detection of decay and incipient decay, evaluation of the data feed, automatic diameter detection for automatic withdrawal of the drilling needle after exiting below a particular drilling angle, displaying the drilling result immediately after drilling, individual user adjustment.

IML WoodInspector incl. PD-Tools PRO

Item No. 3100814

IML WoodInspector Complete Package
incl. IML WoodInspector, FEED, TLT, SCL and ACS

Item No. 3100815

ACS Access Control



Locks of almost all functions and settings with a password prompt. Avoids an unintentional change of device settings.

ACS Access Control

Item No. 4100020

RCI API (application programming interface)

Interface for configuration, control and data transfer to customer software (not using PD-Tools/PD-Tools PRO). The data may be processed further directly by the customer software.

RCI API

Item No. 3100807

Optional Accessories

IML-RESI PD-Series

Shoulder Strap

Shoulder strap with 2 snap hooks and 2 sturdy eyelets on the instrument



Shoulder Strap

Item No. 30009903

Ring Eyelets for Shoulder Strap

Item No. 4100036

Transport Bag

Transport bag with belt for IML-RESI PD instrument with practical side pockets for batteries, pliers and quiver



Transport Bag for IML-RESI PD300 / PD400

Item No. 4100047

Transport Bag for IML-RESI PD500

Item No. 4100053

Screenprotector

For display protection



Screenprotector

Art.-Nr. 4100058

Cleaning Tool

Tool for cleaning the front adapter



Cleaning Tool with Brush

Item No. 4100056

Front Adapter

Extension attachment for the PD



Front Adapter 25 mm

Item No. 3100932-25

Front Adapter 45 mm

Item No. 3100932-45

Front Adapter 60 mm

Item No. 3100932-60

Optional Accessories

IML-RESI PD-Series

Bluetooth Printer 2.0

On-site print-out of measurements on a 1:1 scale on thermal paper stripes

Bluetooth Printer
incl. 10 thermal-paper rolls



Item No. 4100114

Quiver for Drilling Needles

For safe storage of approximately 50 drilling needles

IML-RESI PD200 / PD300 / PD400

IML-RESI PD500

IML-RESI PD600

IML-RESI PD750

IML-RESI PD1000



Item No. 3104017

Item No. 3105020

Item No. 3105017

Item No. 3105018

Item No. 3105019

System Transport Case

Stable system transport case with foam insert and key



IML-RESI PD200 / PD300

Item No. 3100413

IML-RESI PD400

Item No. 3100711

IML-RESI PD500

Item No. 3100811

IML-RESI PD600

Item No. 3100812

IML-RESI PD750

Item No. 3100911

IML-RESI PD1000

Item No. 3100912

Premium Battery

Spare battery

Premium Battery 18V Li-Ion



Item No. 30009999

Fast Charger for Premium Batteries with Li-Ion Technology 110V - 220V

Only for premium 18V batteries with Li-Ion technology in the MD, F and PD series

Fast Charger 220V for 18V Li-Ion Premium Batteries

Fast Charger 110V with US Plug for 18V Li-Ion Premium Batteries



Item No. 30009932

Item No. 30009934

Disposables

IML-RESI PD-Series – Drilling needles with a special and improved surface coating

Standard Drilling Needles ,Click'

For tree & construction wood inspection (10 pieces per pack)



| | | |
|-----------------|----------------------------------|------------------|
| IML-RESI PD200 | (Ø 3,0 mm tip / length: 422 mm) | Item No. 3100339 |
| IML-RESI PD300 | (Ø 3,0 mm tip / length: 422 mm) | Item No. 3100340 |
| IML-RESI PD400 | (Ø 3,0 mm tip / length: 521 mm) | Item No. 3100341 |
| IML-RESI PD500 | (Ø 3,0 mm tip / length: 688 mm) | Item No. 3100342 |
| IML-RESI PD600 | (Ø 3,0 mm tip / length: 795 mm) | Item No. 3100343 |
| IML-RESI PD750 | (Ø 3,0 mm tip / length: 947 mm) | Item No. 3100344 |
| IML-RESI PD1000 | (Ø 3,0 mm tip / length: 1271 mm) | Item No. 3100345 |

Drilling Needles ,Click' for Pole Inspection

For pole inspection (10 pieces per pack)



| | | |
|-----------------|----------------------------------|------------------|
| IML-RESI PD200 | (Ø 3,0 mm tip / length: 421 mm) | Item No. 3100349 |
| IML-RESI PD300 | (Ø 3,0 mm tip / length: 421 mm) | Item No. 3100350 |
| IML-RESI PD400 | (Ø 3,0 mm tip / length: 520 mm) | Item No. 3100351 |
| IML-RESI PD500 | (Ø 3,0 mm tip / length: 687 mm) | Item No. 3100352 |
| IML-RESI PD600 | (Ø 3,0 mm tip / length: 794 mm) | Item No. 3100353 |
| IML-RESI PD750 | (Ø 3,0 mm tip / length: 946 mm) | Item No. 3100354 |
| IML-RESI PD1000 | (Ø 3,0 mm tip / length: 1270 mm) | Item No. 3100355 |

Thermal-Paper Rolls

Thermal-paper rolls for IML-RESI PD-Series Bluetooth printers
(10 rolls per pack)



| | |
|------------------------------------------|------------------|
| For Bluetooth Printer 1.0 (25m per roll) | Item No. 3100336 |
| For Bluetooth Printer 2.0 (12m per roll) | Item No. 3100337 |

Spare Parts

IML-RESI PD-Series

45° Adapter

Aluminium adapter

45° Adapter

PVC Ring for the 45° Adapter



Item No. 3100932

Item No. 10700-021

Front Adapter

Complete front adapter made of brass

Front Adapter without Measuring Sleeve



Item No. 3100937

Tool Kit Front Adapter

Tool kit for the exchange of the measuring sleeve

Tool Kit Front Adapter ,Tree'
incl. tool and 2x measuring sleeves

Tool Kit Front Adapter ,Pole'
incl. tool and 2x measuring sleeves

Measuring Sleeves ,Tree' 10 pieces

Measuring Sleeves ,Pole' 10 pieces



Item No. 4000158

Item No. 4000163

Item No. 4000162

Item No. 4000165

Handle

Additional handle which can be attached to the device in different positions

Handle



Item No. 4100024

USB Cabel and Cover

Additional USB cable and USB cover for the PD

USB Cable

USB Cover

Item No. 4100065

Item No. 10600-015

Pliers

Pliers for the PD and for the F device

Pliers

Item No. 4100025

Spare Parts

IML-RESI PD-Series

Exchangeable Telescope

Exchangeable telescope



IML-RESI PD200 / PD300 / PD400

Item No. 4100016

IML-RESI PD500

Item No. 4100021

IML-RESI PD600

Item No. 4100031

IML-RESI PD750

Item No. 4100022

IML-RESI PD1000

Item No. 4100023

Exchangeable Drill Chuck ,Click'

Exchangeable drill chuck with ,Click' system

Exchangeable Drill Chuck for all PD-Series Instruments



Item No. 10500-048

Tool Set

For telescope and exchangeable drill chuck

Tool Set with Exchangeable Drill Chuck

Assembly Tool for Telescope

Assembly Tool for Front Adapter Removal

Assembly Tool for Drill Chuck Exchange



Item No. 10500-048/3

Item No. 10500-030/3

Item No. 10800-002

Item No. 10500-029/3

Disinfection Adapter

Adapter for disinfecting the drilling needle



Disinfection Adapter for Standard Drilling Needles

Item No. 4100043

Disinfection Adapter for Pole Inspection Drilling Needles

Item No. 4100042

Felt Wheels 10 Pieces

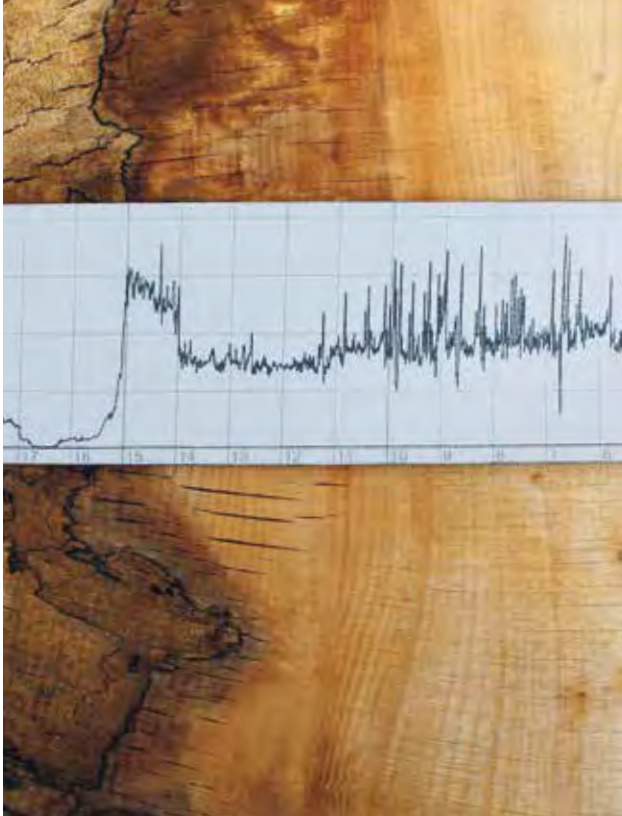
Item No. 4100044

Adapter for Telescope Key

Item No. 10500-025

IML-RESI F-Series

Compact and flexible use



IML-RESI F-Series

Compact and flexible use

IML-RESI F-Series

The IML-RESI F-Series can be used anywhere where reliable and meaningful test results are required.

- Cordless drill as a drive unit
- On-site documentation of measurement results
- Recording of the measurement curve on weather-proof wax paper strips
- Low weight ensures efficient operation even in difficult operational areas
- Splash-proof stainless steel housing with plexiglass cover to protect the measurement record
- Measurements below 45° using snap-on adapter for drills with construction wood configuration

The IML-RESI F-Series is Available in Two Versions for Different Applications:

- Tree inspection
- Construction wood

Further Two Enhanced Versions can be Ordered:

- **S-Version:** Particularly stable design of the needle support for frequent use in hardwoods
- **SX-Version:** Improved needle guidance using the exchangeable telescope

Scope of Delivery (Tree Inspection):

- F-Series measurement device with mounted drilling needle
- Bosch drill GSR 18V Li-Ion Professional with adapter ring
- 220V Charger Li-Ion 18V and 2x 18V Li-Ion 5,0 Ah batteries
- Shoulder strap
- 10x drilling needles
- 400x wax paper strips
- Paper cassette
- Tool for maintenance ,Tool Kit'
- System transport case
- Instructions manual



IML-RESI F300SX



Scope of Delivery (Construction Wood):

- F-Series measurement device with mounted drilling needle for 45° Adapter
- Bosch drill GSR 18V Li-Ion Professional with adapter ring
- 220V Charger Li-Ion 18V and 2x 18V Li-Ion 5,0 Ah batteries
- Shoulder strap
- 45° Adapter
- 10x drilling needles for 45° Adapter
- 400x wax paper strips
- Paper cassette
- Tool for maintenance ,Tool Kit'
- System transport case
- Instructions manual

IML-RESI F-Series

For Tree Inspection



IML-RESI F-Series for Tree Inspection

| | |
|----------------------------------------|---------------------|
| IML-RESI F300 Drilling depth 300 mm | Item No. 3100800-3S |
| IML-RESI F400 Drilling depth 400 mm | Item No. 3100800-4S |
| IML-RESI F500 Drilling depth 500 mm | Item No. 3100800-5S |

IML-RESI FS-Series for Tree Inspection (Reinforced S-Version)

| | |
|-----------------------------------------|---------------------|
| IML-RESI F300S Drilling depth 280 mm | Item No. 3100810-3S |
| IML-RESI F400S Drilling depth 380 mm | Item No. 3100810-4S |
| IML-RESI F500S Drilling depth 480 mm | Item No. 3100810-5S |

IML-RESI FSX-Series for Tree Inspection (Reinforced SX-Version)

| | |
|------------------------------------------|----------------------|
| IML-RESI F300SX Drilling depth 280 mm | Item No. 3100810-3SX |
| IML-RESI F400SX Drilling depth 380 mm | Item No. 3100810-4SX |
| IML-RESI F500SX Drilling depth 480 mm | Item No. 3100810-5SX |

IML-RESI F-Series

For Construction Wood Inspection



IML-RESI F-Series for Construction Wood

| | |
|----------------------------------------|---------------------|
| IML-RESI F300 Drilling depth 300 mm | Item No. 3100900-3S |
| IML-RESI F400 Drilling depth 400 mm | Item No. 3100900-4S |
| IML-RESI F500 Drilling depth 500 mm | Item No. 3100900-5S |

IML-RESI FS-Series for Construction Wood (Reinforced S-Version)

| | |
|-----------------------------------------|---------------------|
| IML-RESI F300S Drilling depth 280 mm | Item No. 3100910-3S |
| IML-RESI F400S Drilling depth 380 mm | Item No. 3100910-4S |
| IML-RESI F500S Drilling depth 480 mm | Item No. 3100910-5S |

IML-RESI FSX-Series for Construction Wood (Reinforced SX-Version)

| | |
|------------------------------------------|----------------------|
| IML-RESI F300SX Drilling depth 280 mm | Item No. 3100910-3SX |
| IML-RESI F400SX Drilling depth 380 mm | Item No. 3100910-4SX |
| IML-RESI F500SX Drilling depth 480 mm | Item No. 3100910-5SX |

Disposables

IML-RESI F-Series

Standard Drilling Needles

With special and improved surface coating
(10 pieces per pack)



| | | |
|-----------------------|---------------------------------|------------------|
| IML-RESI F300 / F300S | (Ø 3,0 mm tip / length: 370 mm) | Item No. 3100316 |
| IML-RESI F400 / F400S | (Ø 3,0 mm tip / length: 480 mm) | Item No. 3100416 |
| IML-RESI F500 / F500S | (Ø 3,0 mm tip / length: 590 mm) | Item No. 3100516 |

Standard Drilling Needles for 45° Adapter

With special and improved surface coating
(10 pieces per pack)



| | | |
|--------------------------------|---------------------------------|------------------|
| IML-RESI F300 / F300S / F300SX | (Ø 3,0 mm tip / length: 387 mm) | Item No. 3100317 |
| IML-RESI F400 / F400S / F400SX | (Ø 3,0 mm tip / length: 497 mm) | Item No. 3100417 |
| IML-RESI F500 / F500S / F500SX | (Ø 3,0 mm tip / length: 607 mm) | Item No. 3100517 |

Drilling Needles for Pole Inspection for 45° Adapter

With special and improved surface coating
(10 pieces per pack)



| | | |
|--------------------------------|---------------------------------|------------------|
| IML-RESI F300 / F300S / F300SX | (Ø 3,0 mm tip / length: 387 mm) | Item No. 3100319 |
| IML-RESI F400 / F400S / F400SX | (Ø 3,0 mm tip / length: 497 mm) | Item No. 3100419 |
| IML-RESI F500 / F500S / F500SX | (Ø 3,0 mm tip / length: 607 mm) | Item No. 3100519 |

Wax Paper Strips (cm)

Wax paper strips with cm-scale (400 pieces per pack)



| | |
|--------------------------------|------------------|
| IML-RESI F300 / F300S / F300SX | Item No. 3100315 |
| IML-RESI F400 / F400S / F400SX | Item No. 3100415 |
| IML-RESI F500 / F500S / F500SX | Item No. 3100515 |

Optional Accessories

IML-RESI F-Series

Bosch Drill

Drive unit for IML-RESI F-Series

Bosch Drill GSR 18V Li-Ion Professional with Special Adapter
incl. charger, 2x Premium Li-Ion 18V 5,0 Ah batteries, adapter ring and instructions Item No. 31000118



Quiver for Drilling Needles

For safe storage of approximately 50 drilling needles

IML-RESI F300 / F300S / F300SX

Item No. 3103016

IML-RESI F400 / F400S / F400SX

Item No. 3104016

IML-RESI F500 / F500S / F500SX

Item No. 3105016



System Transport Case

Transport case with foam insert and key

IML-RESI F300 / F300S / F300SX

Item No. 3100313

IML-RESI F400 / F400S / F400SX

Item No. 3100413

IML-RESI F500 / F500S / F500SX

Item No. 3100413



Shoulder Strap

Shoulder strap with 2 snap hooks and 2 sturdy eyelets on the instrument

Shoulder Strap

Item No. 30009903

Ring Eyelets for Shoulder Strap

Item No. 4100036



Premium Akku

For Bosch Drill GSR 18V Li-Ion Professional

Premium Battery 18V Li-Ion

Item No. 30009999



Fast Charger for Premium Batteries Li-Ion Technology 110V - 220V

Only for premium 18V batteries with Li-Ion technology

Fast Charger 220V for 18V Li-Ion Premium Batteries

Item No. 30009932

Fast Charger 110V with US Plug for 18V Li-Ion Premium Batteries

Item No. 30009934



Spare Parts

IML-RESI F-Series

45° Adapter

Snap-on adapter allows measurements below 45° to the ground level

45° Adapter
incl. sleeve, extension of needle guidance and assembly instructions



Item No. 3100015

'Tool Kit'

Tool kit for minor maintenance and repair operations

1 component pliers, pin punch, screwdriver 4 mm, 1 hexagon pin spanner with t-handle 2,5 mm, 1 hexagon wrench 1,5 mm & 2,0 mm, hook spanner, 1x clutch set, 6 casing screws, 5 safety pins and 1 oil can, 1x hook wrench



Tool Kit

Item No. 3100010

Safety Pins

Safety Pins for overload protection (10 pieces per pack)

Safety Pins



Item No. 3800-059

Clutch

Clutch Cover



Item No. 3800-065

Clutch Set

2x clutch discs, 1x clutch bushing, 1x clutch nut,
3x faceplates 0,5, 2x nord lock discs, 1x disassembly magnet



Clutch Set

Item No. 3800-111

Exchangeable Telescope

Exchangeable telescope



IML-RESI F300SX / F400SX

Item No. 4100016F

IML-RESI F500SX

Item No. 4100017F