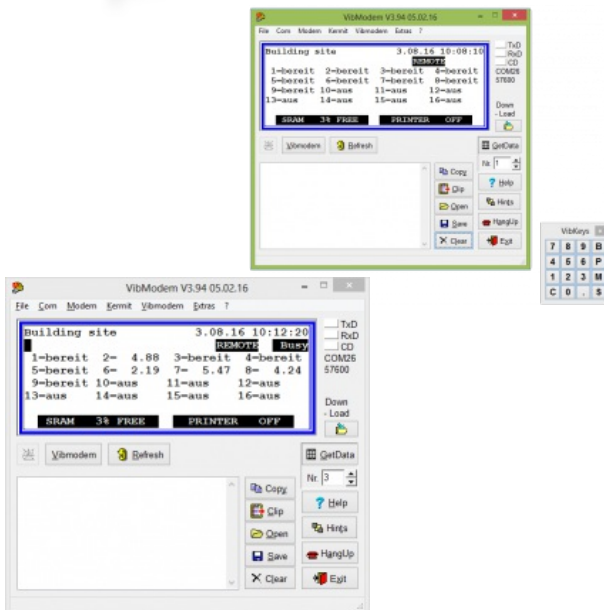


## VibModem

VibModem for the remote control and data transfer.



WALESCH Electronic GmbH  
Gestenrietstrasse 2  
CH-8307 Effretikon, Switzerland  
Phone +41 52 343 80 80  
Mail: [info@walesch.ch](mailto:info@walesch.ch)  
Web: [www.walesch.ch](http://www.walesch.ch)

## VibModem

VibModem for the remote control and data transfer.

VibModem has been developed for remote controlling and the data transfer to the computer. You can check the construction sites from everywhere with a computer connected to the internet. The measured data can be transmitted manually or automatically.

Main Features:

- Operation and display as at the VIBRAS
- Store of modem settings and phone numbers
- Automatic transfer of the measuring data and the brief data memory
- Translation of the PBF file into ASCII-Format
- Versions for all Windows Computers

### Links/Downloads



This Document as Web Document

Link: [http://www.walesch.ch/index.php?segment=vibras&product=vib\\_modem](http://www.walesch.ch/index.php?segment=vibras&product=vib_modem)



Software Download (Login required)

Link: <https://www.walesch.ch/downloads/index.php>

### Related Products



vibras.net Web  
Monitoring Solution



VibChart



VibPbfList



VibLongPeak

Subject to modifications and errors

WALESCH Electronic GmbH, Gestenrietstrasse 2, CH-8307 Effretikon, Switzerland,  
Phone +41 52 343 80 80, Mail: [info@walesch.ch](mailto:info@walesch.ch), Web: [www.walesch.ch](http://www.walesch.ch)

**Contact**

**Address**

WALESCH Electronic GmbH  
Gestenrietstrasse 2  
CH 8307 Effretikon  
+41 52 343 80 80  
info@walesch.ch